

Melody writing - Chord analysis

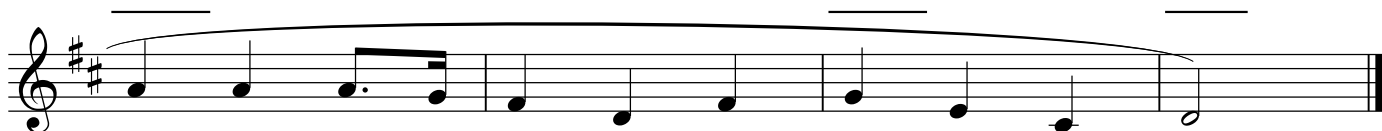
Fill in root/quality chord symbol in the lines above the score.

Identify the key.

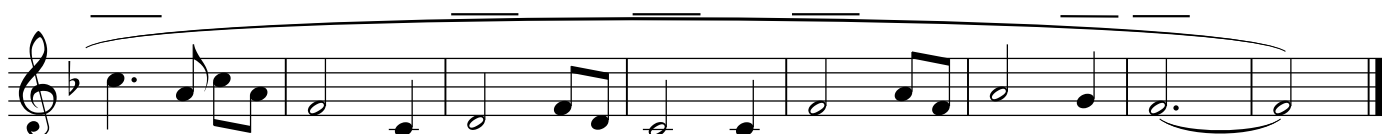
Write functional chord symbols (Roman numerals and figured bass) below the score.

Identify the cadence at the end of each phrase marking.

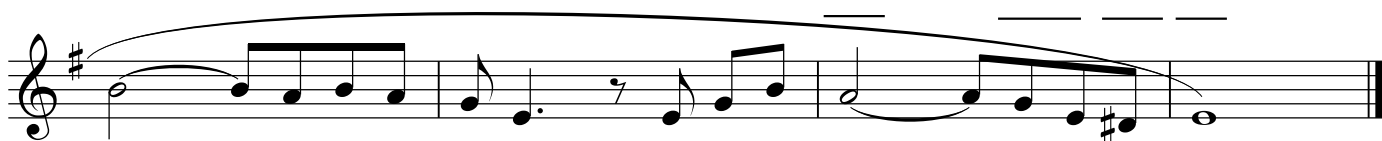
"The Holly Carol" _____



"Amazing Grace" _____



"Wayfaring
Stranger" _____



"Scarborough
Fair" _____

